

LCE LED &
COMPONENTS
EXPERT

LED NEON FLEX SPECIFICATION

IP67 NEON 0817 24V SIDE VIEW



IP67 NEON 0817 24V SIDE VIEW

LCE LED & COMPONENTS EXPERT

Regular power 5W/m and 10W/m for option

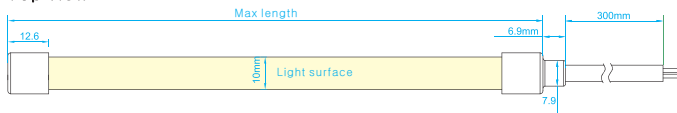
Max length 25 meters with one end power

Eight CCT optional from 2100K to 6000K

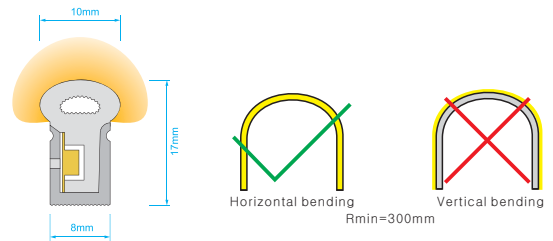
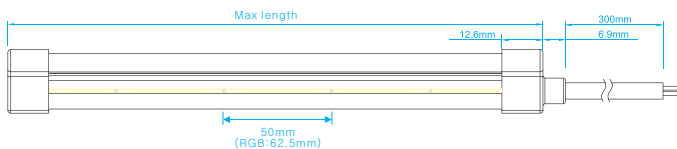


Dimensions & Waterproof

Top view



Side view



Product specification

Voltage DC24 V

CRI/Ra >90

Ambient temperature -25°C~45°C

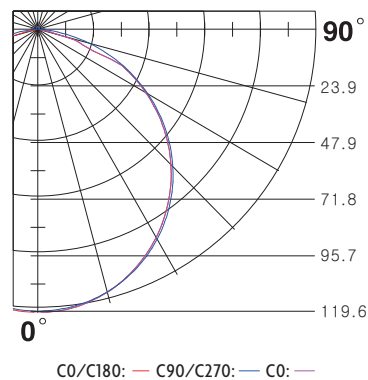
Color Type Cutting length (mm)

Single color 50mm

Tunable white 50mm

RGB color 62.5mm

Polar curve (The data base on 10W 4000K)



White color parameters

| Part Number | CCT (K) | Low power(5w/m) | | High power (10w/m) | |
|-----------------|---|-----------------|--------------|--------------------|--------------|
| | | (lm/m) | (max length) | (lm/m) | (max length) |
| ▶ LCE-S0817-W21 | 2100K ⁺¹⁰⁰ / ₋₁₀₀ | 142 | 19m | 271 | 13m |
| ▶ LCE-S0817-W24 | 2400K ⁺¹⁰⁰ / ₋₁₀₀ | 148 | 19m | 285 | 13m |
| ▶ LCE-S0817-W27 | 2700K ⁺¹⁰⁰ / ₋₁₀₀ | 159 | 19m | 310 | 13m |
| ▶ LCE-S0817-W30 | 3000K ⁺¹⁰⁰ / ₋₁₀₀ | 154 | 19m | 311 | 13m |
| ▶ LCE-S0817-W35 | 3500K ⁺²⁰⁰ / ₋₁₀₀ | 160 | 19m | 323 | 13m |
| ▶ LCE-S0817-W40 | 4000K ⁺³⁰⁰ / ₋₂₀₀ | 174 | 19m | 340 | 13m |
| ▶ LCE-S0817-W50 | 5000K ⁺³⁰⁰ / ₋₂₀₀ | 175 | 19m | 344 | 13m |
| ▶ LCE-S0817-W60 | 6000K ⁺³⁰⁰ / ₋₁₀₀ | 166 | 19m | 319 | 13m |

Tunable color parameters

| Part Number | CCT (K) | Low power(5w/m) | | High power(10w/m) | |
|----------------|------------|-----------------|--------------|-------------------|--------------|
| | | (lm/m) | (max length) | (lm/m) | (max length) |
| ▶ LCE-S0817-TW | 2500-2900K | 81 | 5m | 169 | 5m |
| ▶ LCE-S0817-TW | 5000-5800K | 83 | 5m | 173 | 5m |
| ▶ LCE-S0817-TW | 3500-4200K | 161 | 5m | 332 | 5m |

RGB color parameters

| Part Number | Color (nm) | Low power(5w/m) | | High power(10w/m) | |
|-----------------|-------------------|-----------------|--------------|-------------------|--------------|
| | | (lm/m) | (max length) | (lm/m) | (max length) |
| ▶ LCE-S0817-R | Red(620-625nm) | 67.7 | 25m | 192.2 | 17m |
| ▶ LCE-S0817-G | Green(515-525nm) | 195.0 | 19m | 466.0 | 13m |
| ▶ LCE-S0817-B | Blue(460-465nm) | 34.7 | 19m | 92.7 | 13m |
| ▶ LCE-S0817-Y | Yellow(585-595nm) | 14.6 | 25m | 37.4 | 17m |
| ▶ LCE-S0817-P | Pink | 74.3 | 19m | 195.8 | 13m |
| ▶ LCE-S0817-RGB | RGB | 77.4 | 5m | 108.0 | 5m |

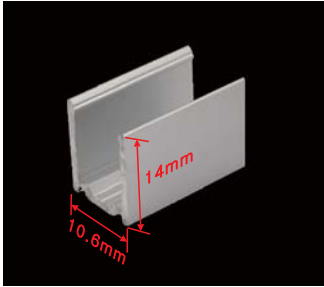
Accessory



Endcap connector with hole



Endcap without hole

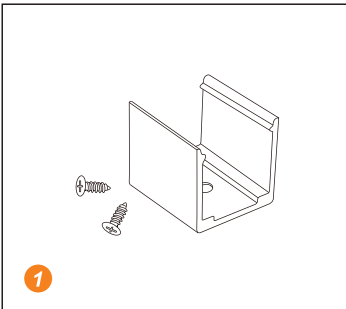


Mounting clip (length: 2cm)
Mounting channel (length: 1m, 2m, 3m)

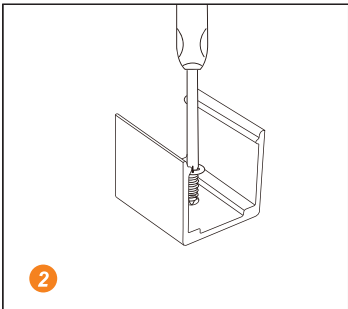


Scissors with angular scale

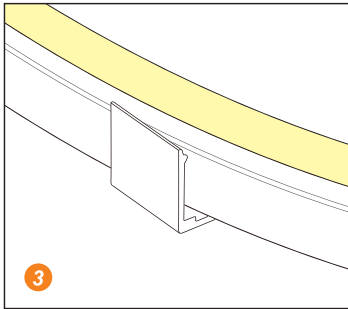
Installation



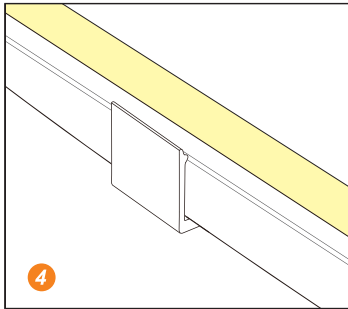
1 Prepare the screws and mounting clips



2 Adjust the fixed clips to the appropriate place, use a screwdriver to fix the screw.



3 Put the light emitting surface upwards, then insert the LED strip into the fixed clips.



4 Fix NEON strip completely into the fixed clip.